

# *KillTest*

更に上のクオリティ 更に上のサービス



## 問題集

<http://www.killtest.jp>

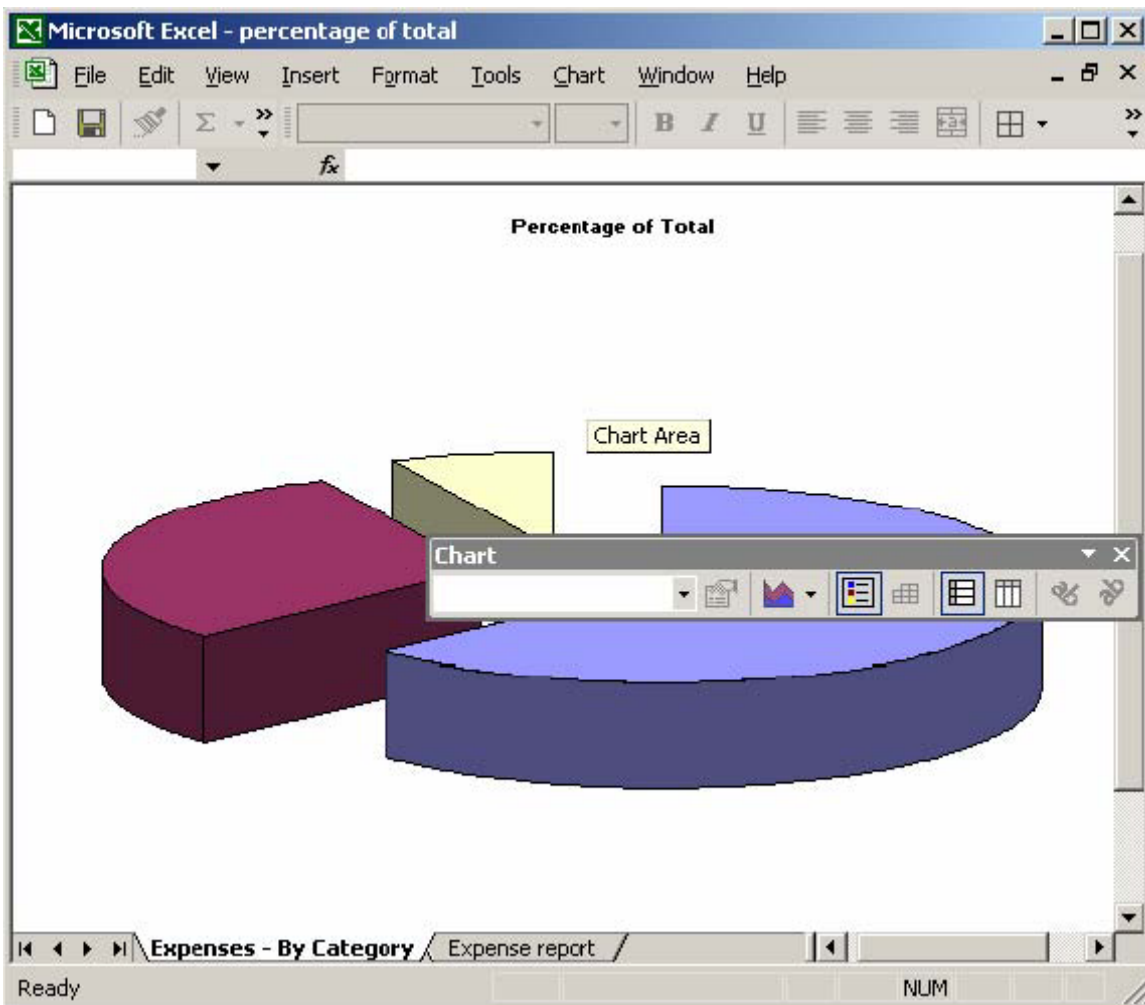
1年で無料進級することに提供する

**Exam** : **MOS-E2K**

**Title** : **Microsoft Excel 2000 CORE**

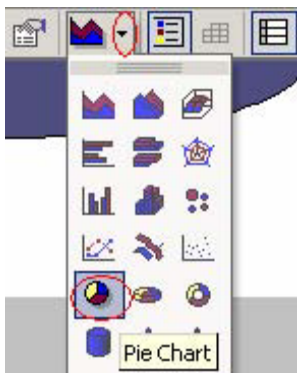
**Version** : **DEMO**

1.



**Answer:**

Step 1: Select the Chart Type button



Step 2: Select Pie chart.

2. Add a header to the worksheet with Investment Analysis appearing at the left of the header, and the page number appearing at the right. In the footer, include the current data in the center.

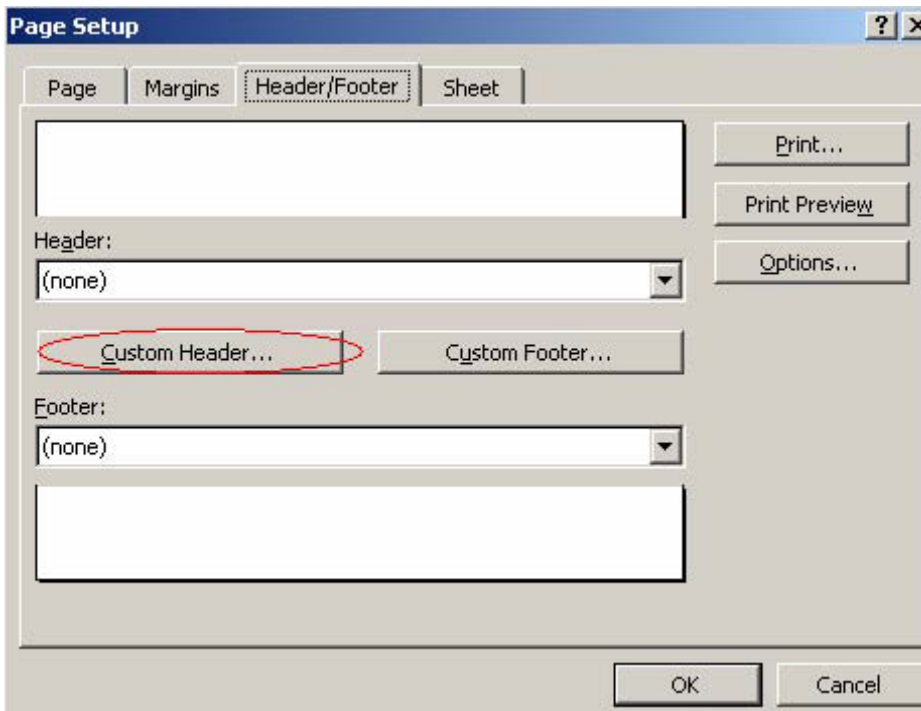
**Future Value Analysis**

		Years to invest					
		2	4	6	8	10	
Interest rate	4%	5,451.67	5,600.41	6,046.63	6,492.85	6,939.07	
	6%	5,501.25	5,649.99	6,096.21	6,542.43	6,988.65	
	8%	5,550.83	5,699.57	6,145.79	6,592.01	7,038.23	
	10%	5,600.41	5,749.15	6,195.37	6,641.59	7,087.81	
	12%	5,649.99	5,798.73	6,244.95	6,691.17	7,137.39	
	14%	5,699.57	5,848.31	6,294.53	6,740.75	7,186.97	
	16%	5,749.15	5,897.89	6,344.11	6,790.33	7,236.55	
	18%	5,798.73	5,947.47	6,393.69	6,839.91	7,286.13	
	20%	5,848.31	5,997.05	6,443.27	6,889.49	7,335.71	
	22%	5,897.89	6,046.63	6,492.85	6,939.07	7,385.29	
	24%	5,947.47	6,096.21	6,542.43	6,988.65	7,434.87	
26%	5,997.05	6,145.79	6,592.01	7,038.23	7,484.45		
28%	6,046.63	6,195.37	6,641.59	7,087.81	7,534.03		
30%	6,096.21	6,244.95	6,691.17	7,137.39	7,583.61		

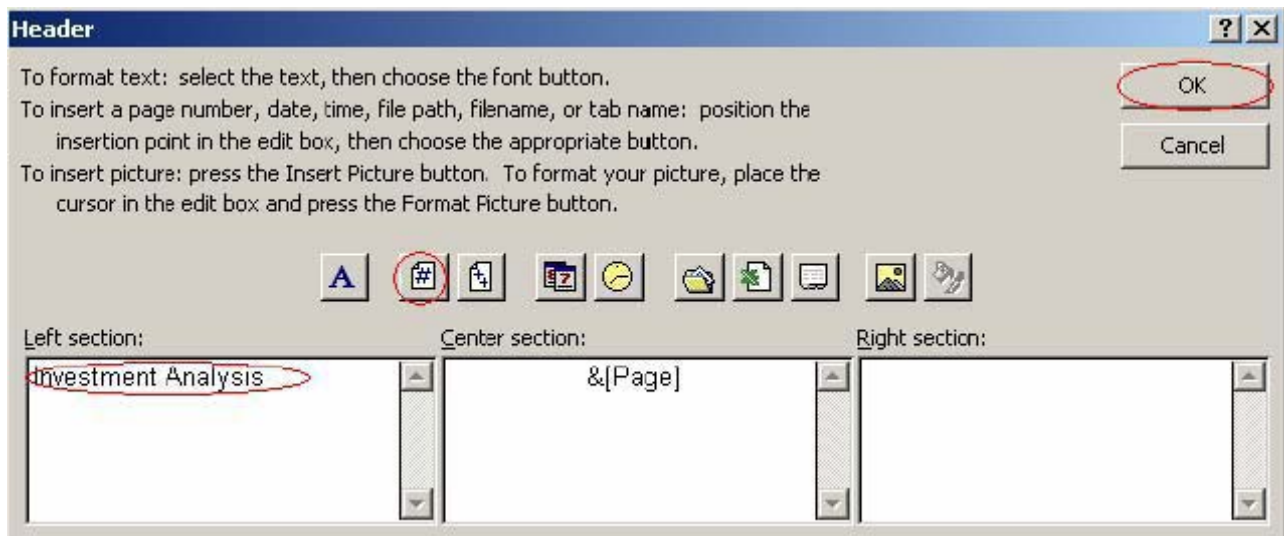
**Answer:**

Step 1: Select the View menu.

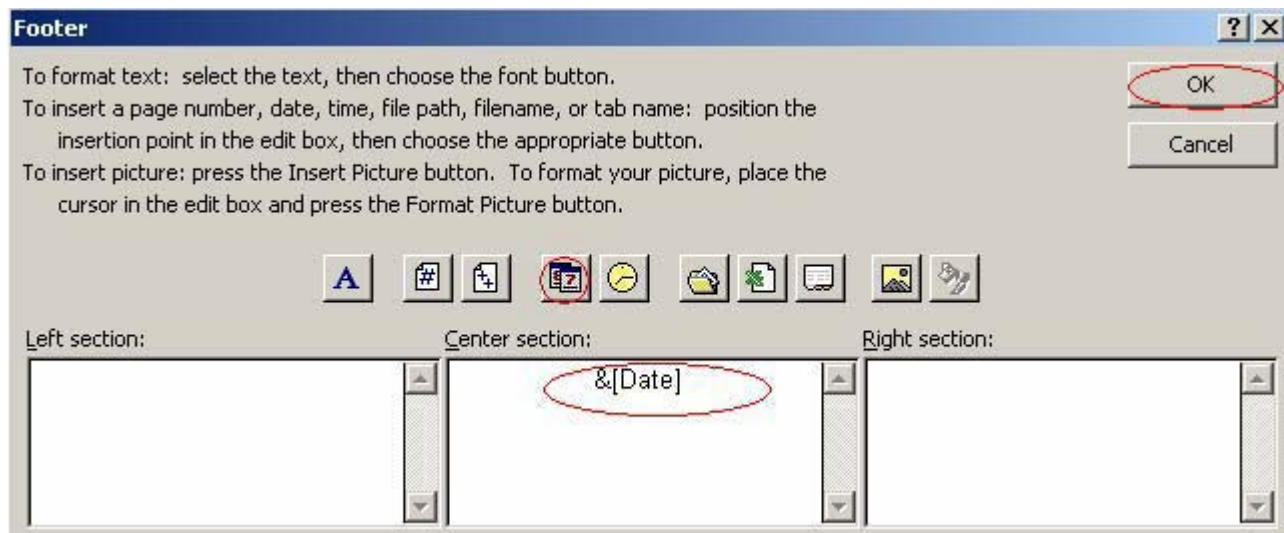
Step 2: Select the Header and Footer command.

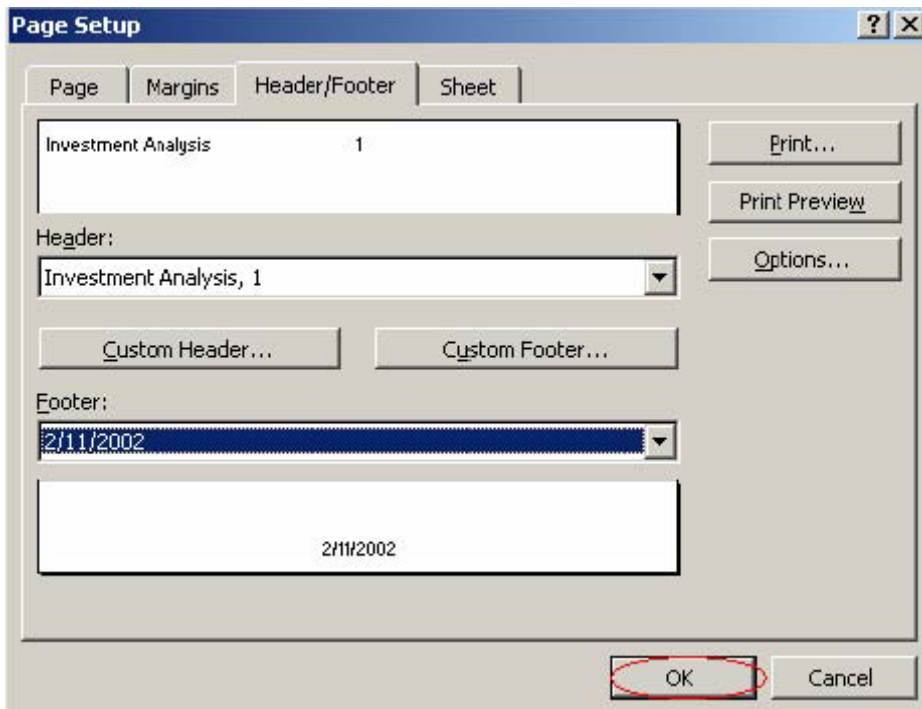


Step 4: Click in the Left section text box.

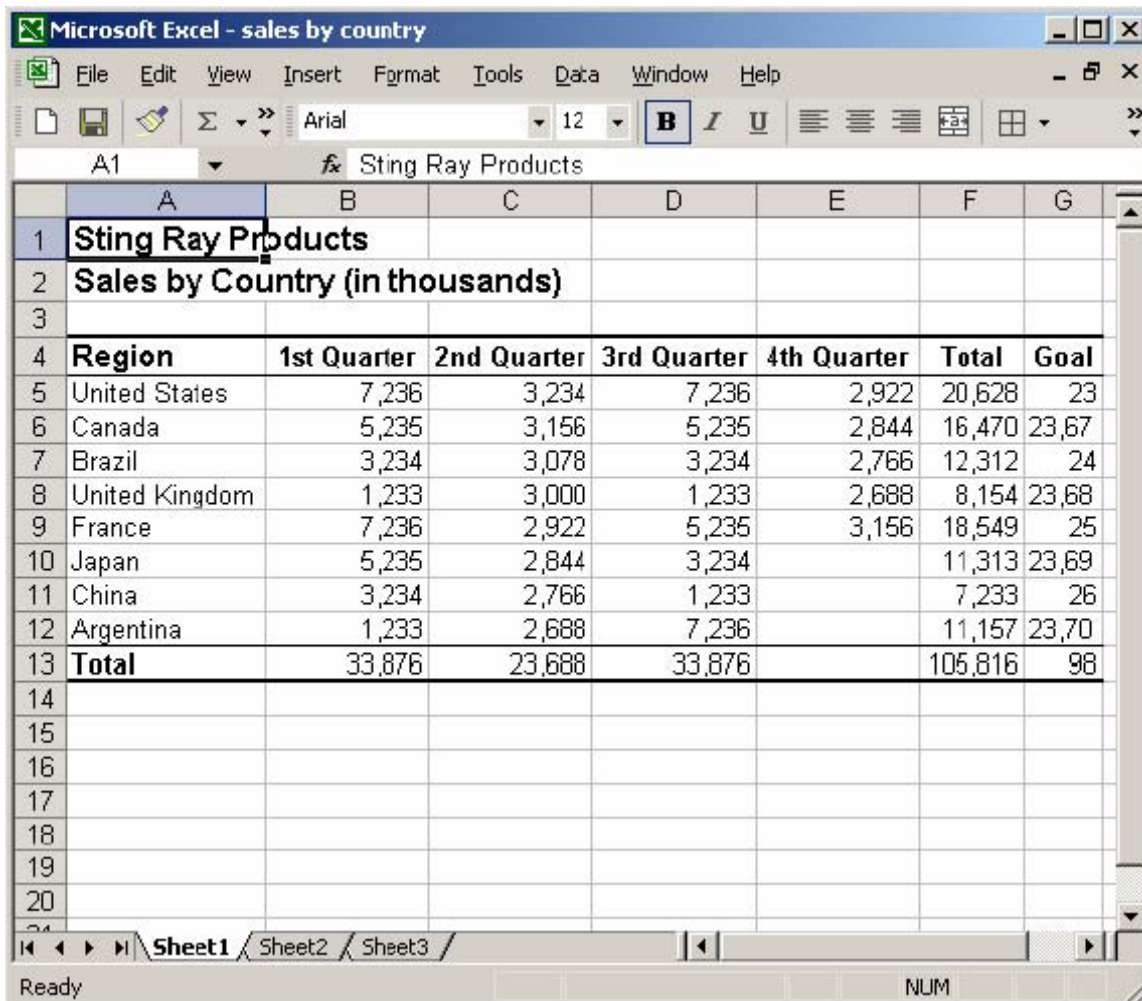


Step 6: Click in Center section text box. Step 7: Click the Page number button. Step 8: Click OK. Step 9: Click the Custom Footer button.





3. Clear the contents of the quarterly values for France in the range B9:E9.





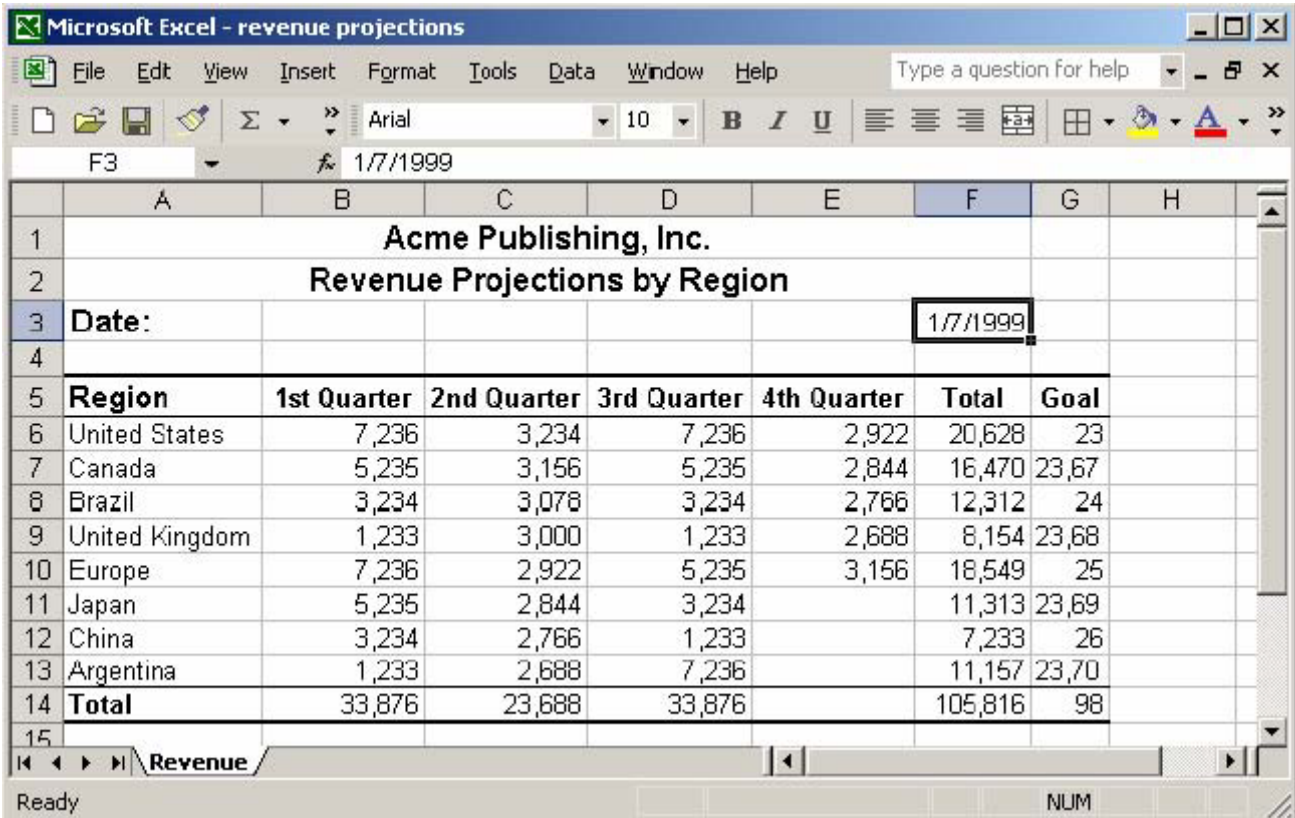
**Answer:**

Step 1: Click cell B9.

Step 2: Press the Shift key and click cell E9.

Step 3: Press the Delete key.

4.Delete the content in the cell range A9:F9. Then, add 1 row before Europe. Add England and Ireland in cells A9 and A10. Finally, copy the formula in cell F8 to cells F9 and F10.



**Answer:**

Step 1: Click cell A9. Step 2: Press the Shift key and click cell F9. Step 3: Press the Delete key. Step 4: Click cell A10. Step 5: Select the Insert menu. Step 6: Select the Rows command. Step 7: Click cell A9. Step 8: Type England and hit the Enter key. Step 9: Type Ireland and hit the Enter key. Step 10: Click the cell F8.

4th Quarter	Total	Goal
2,922	20,628	23
2,844	16,470	23,67
2,766	12,312	24
2,688	8,154	23,68
3,156	18,549	25
	11,313	23,69

5.In cell A3, type Date: and enter 01/07/99 in cell F3 as a date. When you are finished, enter the following revenue projections in cells D6 through E6 respectively. D6: 278927 E6: 344981

Microsoft Excel - revenue projections

File Edit View Insert Format Tools Data Window Help

Type a question for help

Σ >> Arial 10 B I U

E6

	A	B	C	D	E	F	G	H
1	<b>Acme Publishing, Inc.</b>							
2	<b>Revenue Projections by Region</b>							
3								
4								
5	<b>Region</b>	<b>1st Quarter</b>	<b>2nd Quarter</b>	<b>3rd Quarter</b>	<b>4th Quarter</b>	<b>Total</b>		
6	United States	7,236	3,234			10,470		
7	Canada	5,235	3,156	5,235	2,844	16,470		
8	Brazil	3,234	3,078	3,234	2,766	12,312		
9	United Kingdom	1,233	3,000	1,233	2,688	8,154		
10	Europe	7,236	2,922	5,235	3,156	18,549		
11	Japan	5,235	2,844	3,234		11,313		
12	China	3,234	2,766	1,233		7,233		
13	Argentina	1,233	2,688	7,236		11,157		
14	<b>Total</b>	33,876	23,688	26,640	11,454	95,658		
15								

Revenue

Ready NUM

**Answer:**

Step 1: Click cell A3.

Step 2: Type Date: and press enter.

Step 3: Click cell F3.

Step 4: Type 01/07/99 and press enter.

Step 5: Click cell D6.

Step 6: Type 278927 and press the Tab key.

Step 7: Type 344981 and press Enter.