

KillTest

更に上のクオリティ 更に上のサービス



問題集

<http://www.killtest.jp>

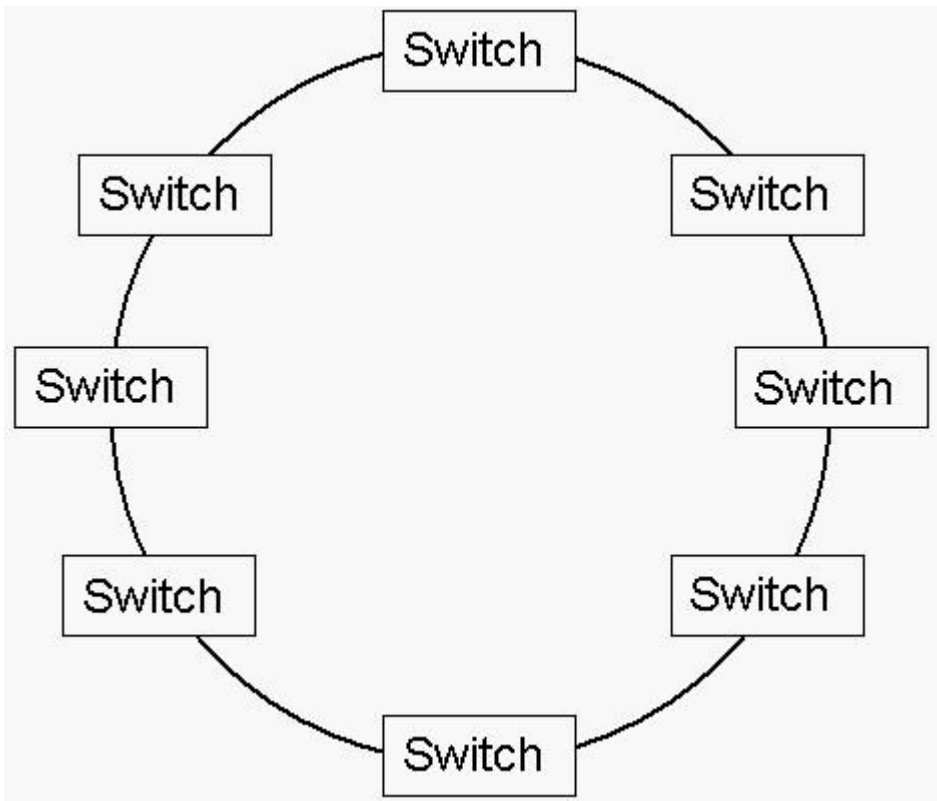
1年で無料進級することに提供する

Exam : **HP0-773**

Title : Installing & Supporting
Standard HP SAN
Environments

Version : DEMO

1. Click the Exhibit button. A customer requests a replacement of B-series switches with M-series switches in the configuration shown in the exhibit. Why is it NOT possible to fulfill the customer's request as a supported solution?



- A. Only Brocade supports a ring topology.
- B. The maximum number of switch hops is three.
- C. A minimum of two inter-switch links is required.
- D. Ring topology requires an uneven number of switches.

Correct: B

2. After gathering all customer requirements, you offer a solution. There are different validation levels available to ensure the solution meets or exceeds the customer's needs. Which method is NOT adequate?

- A. Setup a test environment which addresses most key aspects.
- B. Compare the solution against the rules of the SAN Design Guide.
- C. Compare the solution against the rules of the OEM manufacturer.
- D. Choose a supported standard solution of the SAN Design Guide.

Correct: C

3. What is the most important consideration if a service level requirement is high availability?

- A. capability to scale incrementally over time as storage and connectivity needs increase
- B. decision to implement a dual redundant SAN
- C. implementation of serverless backup
- D. decision to use iSCSI instead of Fibre Channel

Correct: B

4. A customer with HP-UX and Linux servers and EVA storage subsystems wants to integrate all components into one disaster tolerant configuration. What is the best product?

- A.Business Copy
- B.Continuous Access
- C.Secure Path Manager
- D.High Availability Fabric Manager

Correct:B

5.In addition to the SAN Design Reference Guide and the Enterprise Backup Solution Design Guide, what do you need to validate a SAN design with an integrated Enterprise Backup Solution (EBS)? Select TWO.

- A.SAN Compatibility Matrix
- B.EBS Compatibility Matrix
- C.SAN and EBS Sizer Tool
- D.Backup Sizing Tool
- E.SAN Storage Planner

Correct:B D