

KillTest

更に上のクオリティ 更に上のサービス



問題集

<http://www.killtest.jp>

1年で無料進級することに提供する

Exam : **E20-570**

Title : Networked Storage cas
specialist

Version : DEMO

1. Which tool provides the diagnostics screens for the Centera?

- A. CASScript
- B. CenteraCLI
- C. CenteraScript
- D. CenteraViewer

Answer: D

2. What is a method for setting retention at the object level?

- A. API
- B. HPP
- C. MOPI
- D. Control Center

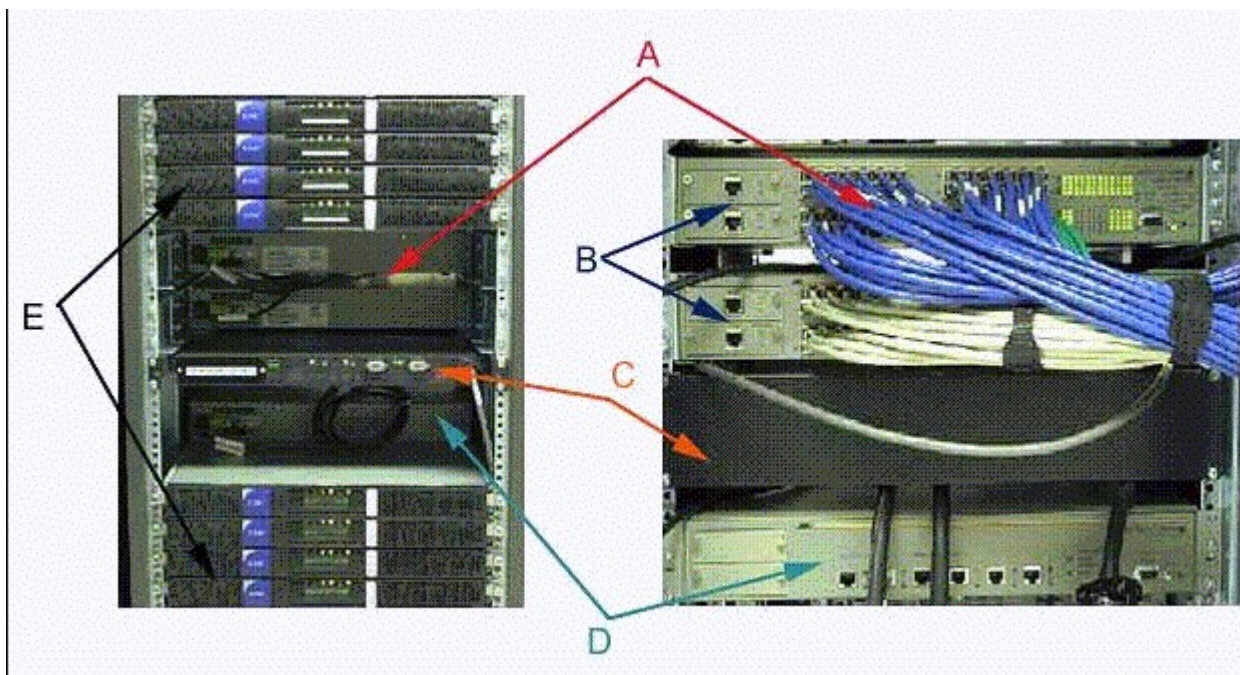
Answer: A

3. A customer wants to enable application profiles in their environment. Their application does NOT natively support application profile use. How does this windows application specify a path to the application security profile?

- A. Have the application access the root profile on the Centera
- B. Application keeps the security profile as part of the metadata
- C. Create a profile and place it in the ini file of the application; then restart the application
- D. Add the CENTERA_PEA_LOCATION environment variable to the windows application server

Answer: D

4. Click the Exhibit button. From the exhibit, identify component A.



- A. Node
- B. Cube switch
- C. Battery backup
- D. External switch

Answer: B

5. A customer with CE+ needs many different retention periods but their application does NOT support a native integration of the API. How does a customer meet this requirement?

- A. Migrate all data to a native application
- B. All data will have an infinite retention period
- C. It is impossible to use retention periods for non-native applications
- D. Use a filesystem-based gateway with different retention periods set on each shared folder

Answer: D

6. How does fixed content differ from backup data?

- A. Fixed content is a subset of backup data
- B. Fixed content has long-term reference value
- C. Backup data sets are a subset of fixed content

D. Backup data sets can include multiple revisions of a file while Fixed content is WORM data

Answer: B

7. What is required to store data on the Centera?

- A. Centera API
- B. Centera CLI
- C. CenteraViewer
- D. Centera store software

Answer: A

8. How would a PC be connected to a CUA if a standard monitor and keyboard were not available onsite?

- A. Via crossover serial cable and a terminal emulator configured for 7 1 Even
- B. Via crossover serial cable and a terminal emulator configured for 8 1 None
- C. Via straight through serial cable and a terminal emulator configured for 7 1 Even
- D. Via straight through serial cable and a terminal emulator configured for 8 1 None

Answer: B

9. How long does content reside on a CUA before it is written to a Centera?

- A. One minute, depending on system load
- B. Typically 45 minutes or when cache is full
- C. Content is immediately written to the Centera
- D. Content is not written directly to the Centera by the CUA

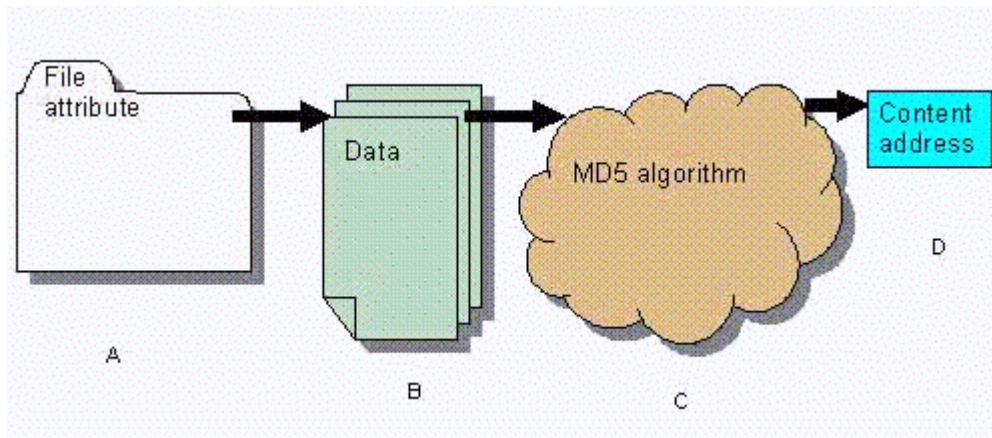
Answer: B

10. Which protection scheme provides maximum useable storage?

- A. CPM
- B. CPP
- C. RAID 4
- D. RAID 1/0

Answer: B

11. Click the Exhibit button. What is the BLOB?



A. A

B. B

C. C

D. D

Answer: B

12. Which algorithm is used to help calculate the content address?

A. API

B. MD5

C. MOBI

D. SHA-1

Answer: B

13. What is required to link two (2) Centera cabinets in one (1) cluster?

A. ATS

B. Root switches

C. Media converter

D. Gigabit uplink modules

Answer: D

14. How is the Centera connected to the mainframe? 1. ESCON 2. HTTP 3. FICON 4. TCPIP

- A. 1, 2, 3
- B. 1, 2, 4
- C. 1, 3, 4
- D. 2, 3, 4

Answer: C

15. Which vendors offer gateway software for the Centera?

- A. Microsoft, SAP, Onyx, Dell
- B. IBM, Lotus, FileNet, StorageTek
- C. Legato, EMC, SevenTen, Arkivio, Enigma
- D. Powerfile, Oracle, Mobius, Princeton Softech

Answer: C

16. Which objects are replicated when replication is enabled?

- A. All objects
- B. Only CDFs
- C. Only data BLOBs
- D. Only objects greater than 250K

Answer: A

17. A customer's application groups objects into a single container before writing them to the Centera. The customer is using a Centera CE+. Half of the objects should be kept for 3 years, and the remainder for 7 years. Which retention period should the customer set on the container to protect their data?

- A. Do not set the retention period
- B. Set the retention period to 3 years
- C. Set the retention period to 7 years
- D. Set the retention period to 50% 3 year, and 50% 7 year.

Answer: C

18. Which troubleshooting utilities are available for the Centera?

- A. Centera Verify and Telnet
- B. Ping and CentralIPconfig
- C. CenteraPing and CenteraVerify
- D. CenteraViewer and PingCentera

Answer: C

19. What is the purpose of Centera Verify?

- A. Verify a completed write
- B. Verify Centera read and write performance
- C. Verify availability of the Centera for writes, reads and deletes
- D. Verify availability of the target Centera in a replicated environment

Answer: C

20. A customer is required to keep dental records for seven years. Which edition of Centera is recommended?

- A. Basic
- B. Compliance
- C. Enhanced basic
- D. Compliance plus

Answer: B