

KillTest

更に上のクオリティ 更に上のサービス



問題集

<http://www.killtest.jp>

1年で無料進級することに提供する

Exam : **650-296**

Title : TelePresence Video Sales
Engineer for Advanced
Exam

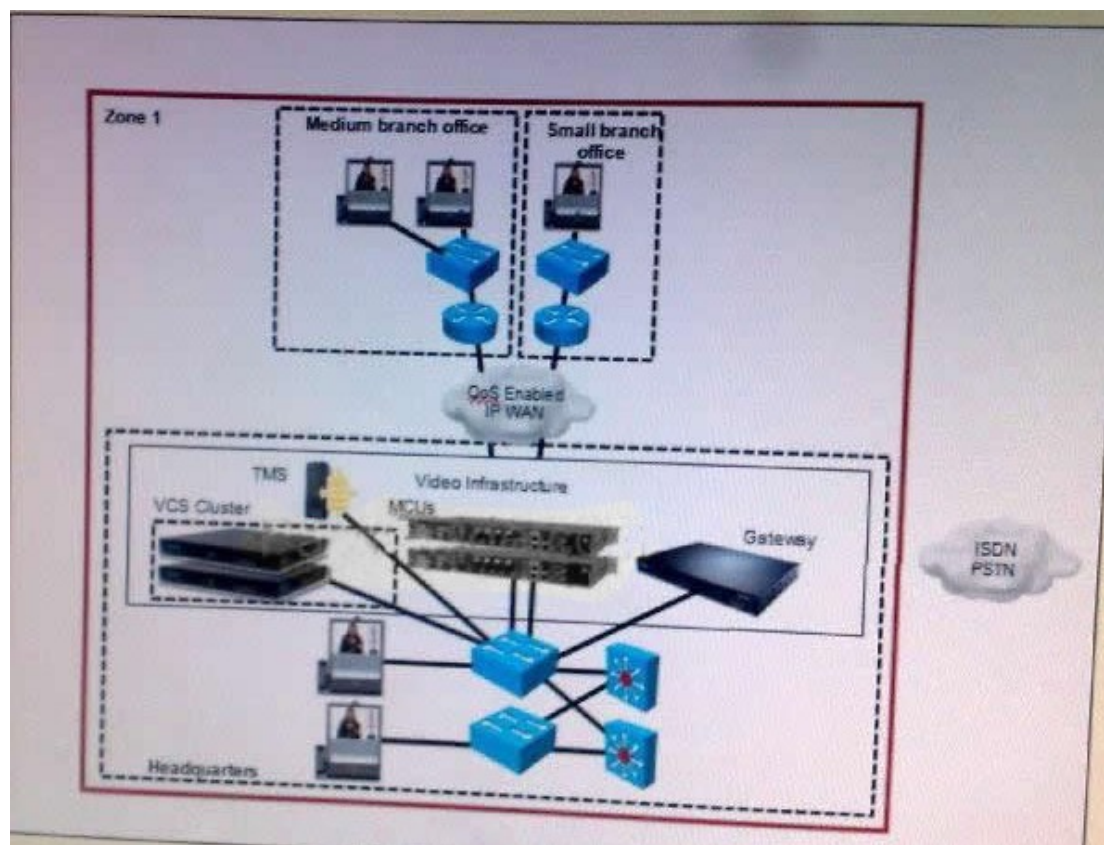
Version : Demo

1. Why would you include a gateway in your design?

- A. Gateways assist in video and conferencing integration
- B. Gateways allow for simplification of the address plan by eliminating the need for dialing a full PSTN number
- C. Gateways provide network translation if varying protocols are used
- D. Gateways are required to integrate multiple endpoints

Answer: C

2. Refer to the exhibit,



Which deployment model is represented.?

- A. campus multizone
- B. WAN multizone
- C. campus single zone
- D. WAN single zone

Answer: D

3. Which three methods can be used to start a conference with the Cisco TelePresence Video Communication Server? (Choose three)

- A. Use the web interface of the Cisco TelePresence Video Communication Server
- B. Use the Cisco TelePresence System user interface
- C. Call directly into a conference from an endpoint
- D. Use a FindMe connection
- E. Connect to a VCS Expressway from an IP endpoint

F. Receive a request-for-conference call from a connected user

G. Use the Cisco TelePresence remote control

Answer: BCG

4.Which of these is an advantage of the multizone model VCS with Prefix Dialing?

A. Location requests are only sent to the relevant zone

B. Location VCS servers only need to know about the directory VCS and do not need to know about any other local VCS

C. When adding a new zone, only the directory gatekeeper needs to be configured

D. All gatekeepers know about all calls at times

Answer: A

5.Your network uses a combination of SIP and H.323 endpoints. When planning to implement firewalls for security, what device permits traversal of the firewall for there devices?]

A. Gateway

B. VCS Expressway

C. Tandberg Management Suite

D. multipoint control unit

E. Cisco TelePresence

Answer: B

6.Which two of these configurations must be applied when dialing from an IP endpoint to an ISDN destination? (Choose two)

A. A dial plan rule must be created

B. Gateway services numbers should mimic incoming PSIT routing methods

C. The Cisco TelePresence Software Version TC4.0 protocol is required

D. DID mapping must be configured on the ISDN gateway Build Your Dreams

E. A prefix must be registered with the gatekeeper

Answer: AE

7.How does the VCS Expressway allow secure traversal of a firewall?

A. It uses a designated port to allow all traffic to pass through the firewall

B. It takes the place of a firewall to control trusted messages using a pre-set list of destinations

C. It makes outbound connections only

D. It prohibits all incoming and outgoing message from untrusted destinations

Answer: C

8.Which MSE blade provides high-definition multipoint control unit support?

A. Cisco MSE 8510 Media2

B. Cisco MSE 8420 Media

C. Cisco MSE 8350 IP GW

D. Cisco MSE 8220 VCR

Answer: A

9.Which of these is a disadvantage of a single-zone (VCS) WAN model?

- A. No endpoints will be able to place calls if connectivity is lost to the VCS location
- B. Not all signaling goes through the VCS in the headquarters, causing signaling traffic across the WAN link
- C. If interworking is required, the media does not go through the VCS in the headquarters, even if the video call is from a branch office endpoint to another endpoint in that office
- D. Flexibility cannot be assured in the headquarters configuration

Answer: A

10.Which two of these tasks should be completed to enable calls through a firewall? (Choose two)

- A. Create one traversal server zone on the VCS Expressway for any VCS Control that is running a traversal client
- B. Configure the traversal server zone with details of the corresponding zone on the traversal client
- C. Create a traversal server zone on your local VCS Control Build Your Dreams
- D. Configure VCS with details of the corresponding zone on the traversal server
- E. Create a traversal client zone on your local VCS Control

Answer: AE