

# *KillTest*

更に上のクオリティ 更に上のサービス



## 問題集

<http://www.killtest.jp>

1年で無料進級することに提供する

**Exam** : **000-787**

**Title** : IBM tivoli Business sys mgr  
v3.1 distributed  
implementation

**Version** : DEMO

**1.Which method starts an upload of all the Tivoli NetView resources to IBM Tivoli Business Systems Manager (ITBSM)?**

- A.from the ITBSM GUI, select Tools then ITBSM Adapter Manager: Bulk Upload
- B.from the ITBSM Database Server, execute the ovbulkdiscovery command
- C.from the IBM Tivoli NetView server, execute the ovbulkdiscovery command
- D.from the IBM Tivoli NetView menu, select Tools then ITBSM Adapter Manager: Bulk Upload

**Correct:D**

**2.In which database are Microsoft SQL jobs stored?**

- A.msdb
- B.Object
- C.master
- D.northwind

**Correct:A**

**3.What is the function of the Resource Priority property on any resource?**

- A.It determines the Alert Level of the Resource.
- B.It determines the priority of an event received by this Resource.
- C.It determines the priority of any Child Event sent from this Resource.
- D.It determines the color of the alert when an Alert Threshold is crossed.

**Correct:C**

**4.What does the tgmtaskconfig command do?**

- A.It configures Task Server code on the server where Task Server is installed.
- B.It defines IBM Tivoli Business Systems Manager (ITBSM) tasks to Task Server.
- C.It configures Task Server to recognize tasks defined in IBM Tivoli Enterprise Console (ITEC).
- D.It configures the list of Task Servers to be connected to by the task process running on the ITBSM servers.

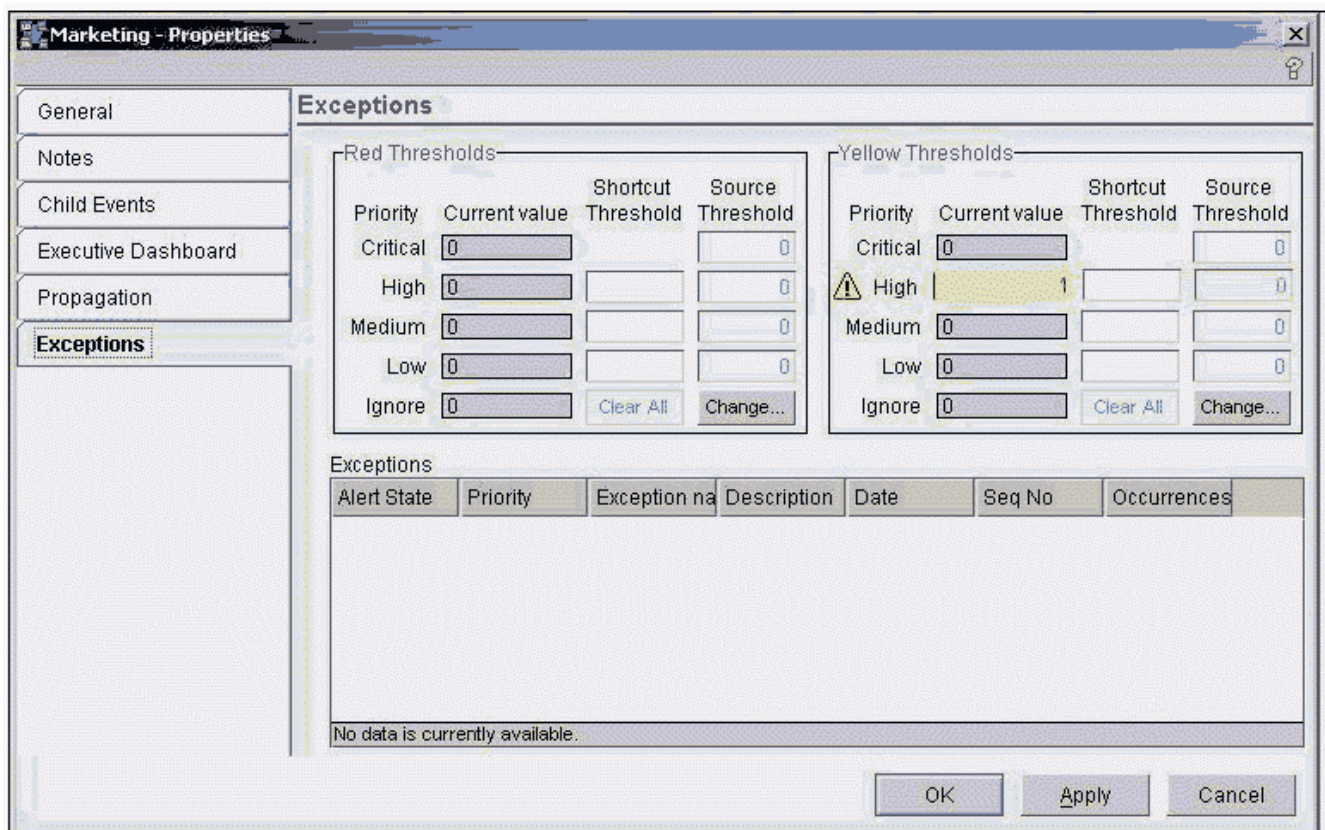
**Correct:D**

**5.Which two statements are true about distributed object placement in the IBM Tivoli Business Systems Manager (ITBSM) All Resources view? (Choose two.)**

- A.The placedistributedobject command is used.
- B.The distributed resources are inserted via the ITBSM GUI.
- C.Resources are dragged and dropped into the All Resources view.
- D.SQL tables are used to place the Resource based on the Discovery Event.
- E.The rule-based technique is used to place the Resource based on the Discovery Event.

**Correct:D E**

**6.Click the Exhibit button. The diagram shows the Exceptions tab for a Business System shortcut. How are the Current values set?**



- A.by typing the value to be set in the Current value column
- B.by Resources in the Business System receiving Exception Type events
- C.by clicking on the Change button on the Exception Type that is to be changed
- D.by navigating to the Non-Shortcut Business System and clicking on the Change button

**Correct:B**

**7.How is a service created for the IBM Tivoli Business Systems Manager (ITBSM) Executive Dashboard?**

- A.right-click on the Tree View and insert a New Service
- B.drag the Resource into the Executive Dashboard view
- C.modify the General tab on the Properties page of the Resource
- D.modify the Executive Dashboard tab on the Properties page of the Resource

**Correct:D**

**8.Which group enables an IBM Tivoli Business Systems Manager (ITBSM) Web Console to create Shared Filters?**

- A.TBSM\_Administrators
- B.TBSM\_WebConsoleUsers
- C.TBSM\_Web\_Console\_Users
- D.TBSM\_Web\_Console\_Administrators

**Correct:A**

**9.Which SQL table in the Object Database is used to turn on event logging for IBM Tivoli Business Systems Manager (ITBSM) distributed events?**

- A.GEM\_Options

- B.TBSMD\_Tracing
- C.GEM\_Trace\_Settings
- D.TBSMD\_Trace\_Options

**Correct:A**

**10.A Tivoli task defined on the IBM Tivoli Business Systems Manager (ITBSM) GUI will NOT execute unless the task is run on which type of host?**

- A.a Tivoli Task Server
- B.a management application server
- C.a host associated with the resource displayed in ITBSM
- D.a Tivoli endpoint or managed node known to the Task Server

**Correct:D**